

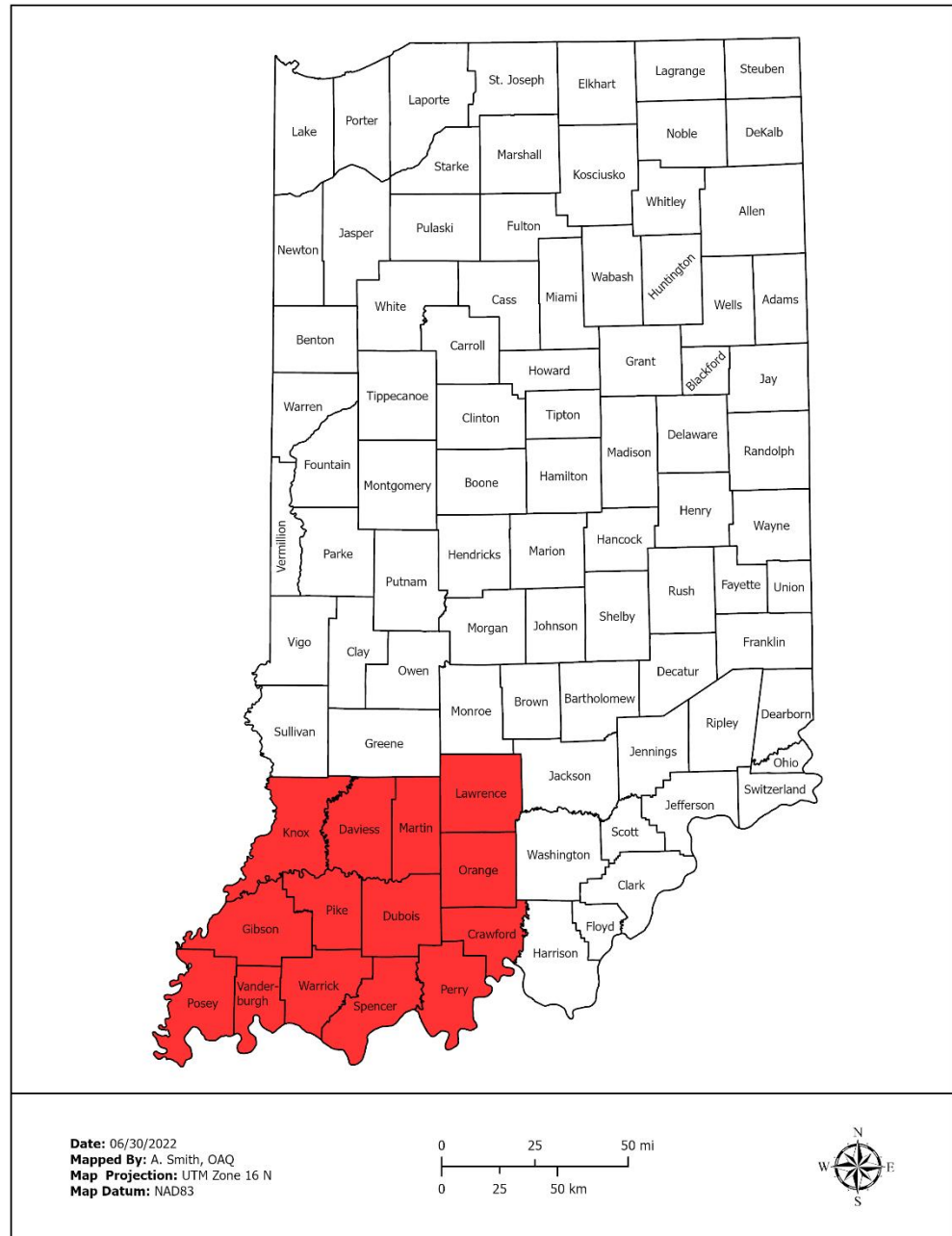
# Status of Indiana Air Quality 30-Year Trend Charts Southwest Indiana 1992-2021



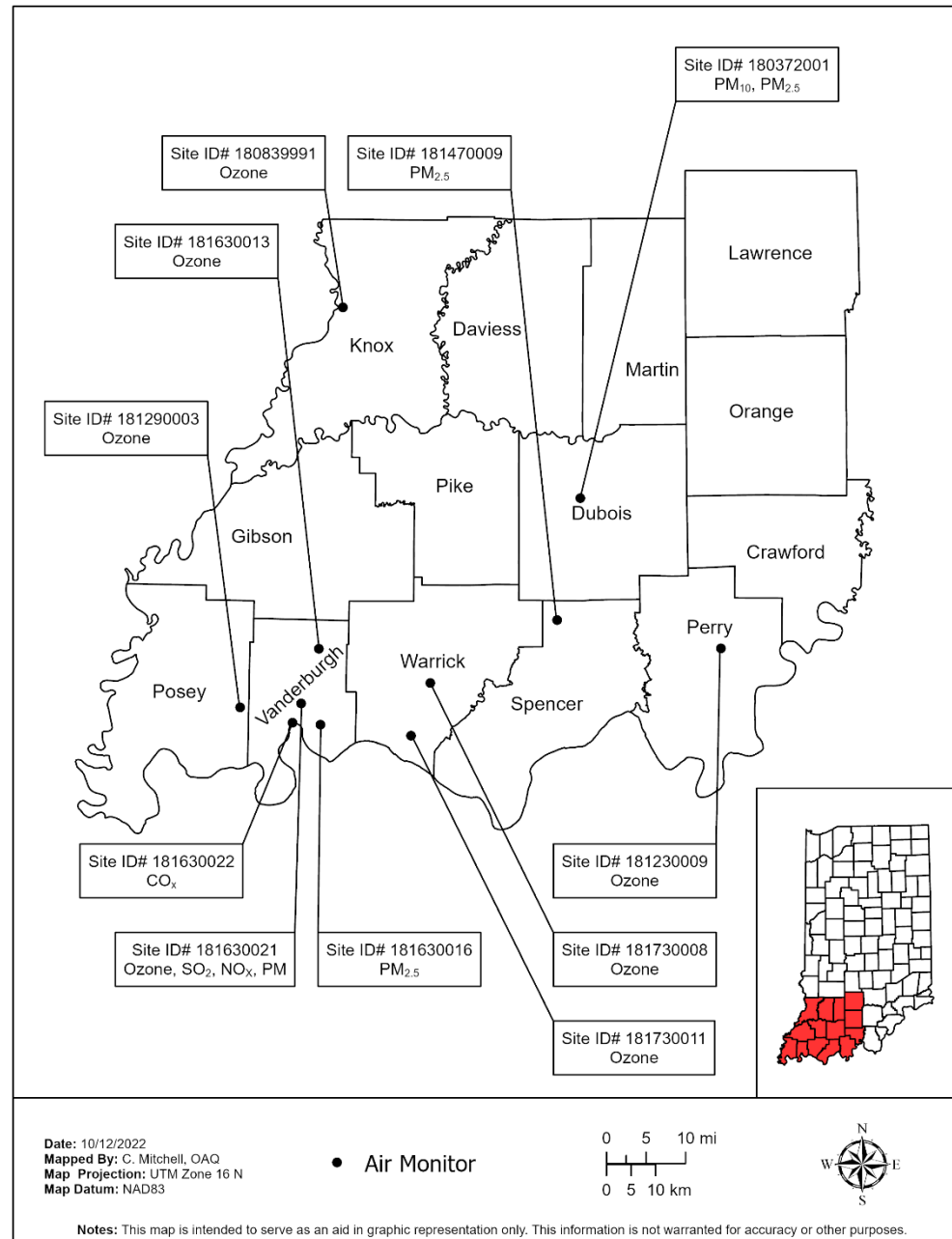
Indiana Department of Environmental Management (IDEM)  
Office of Air Quality

October 2022

# Southwest Indiana Region

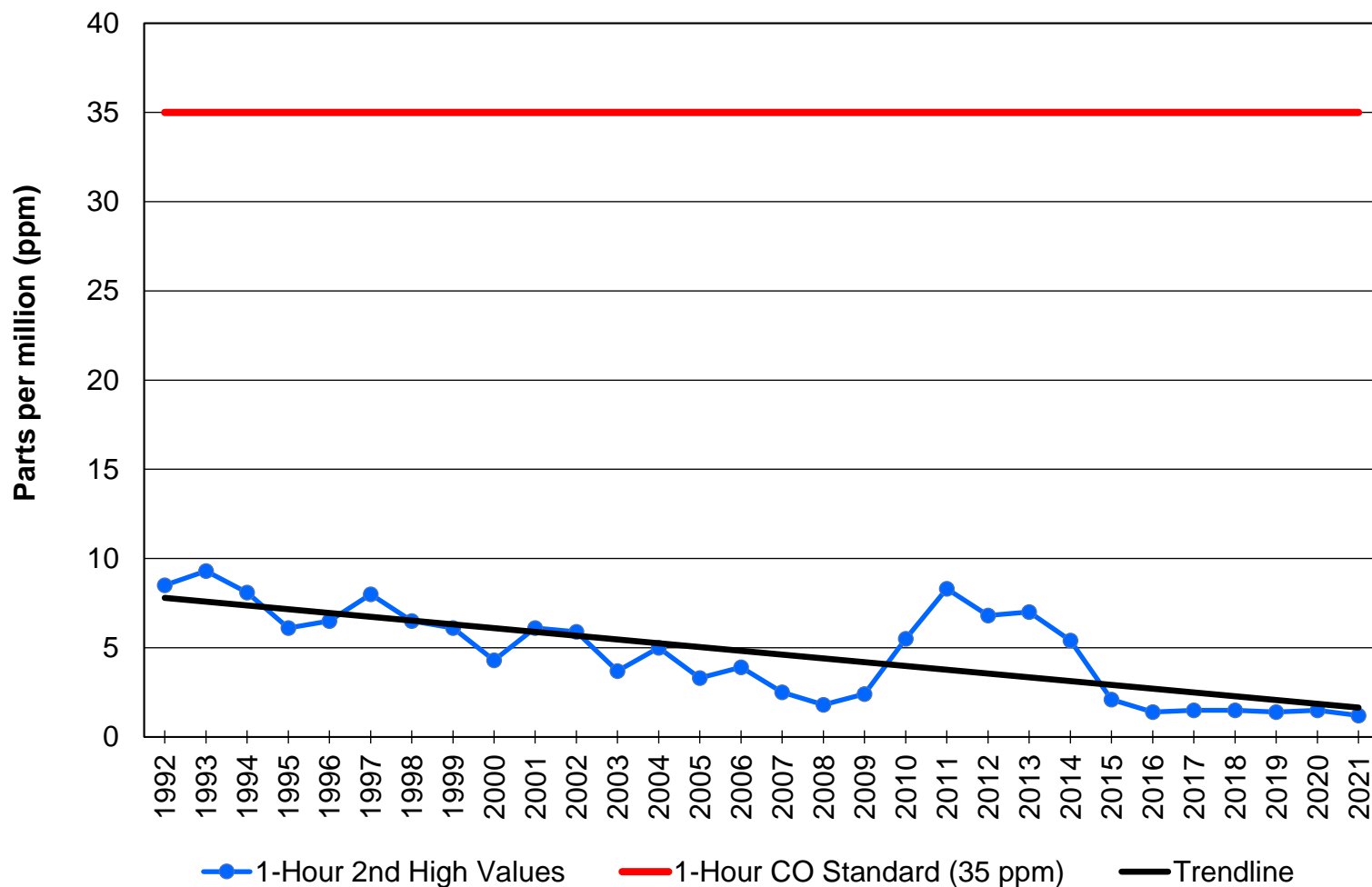


# Southwest Indiana Monitors Operating In 2021



# Carbon Monoxide

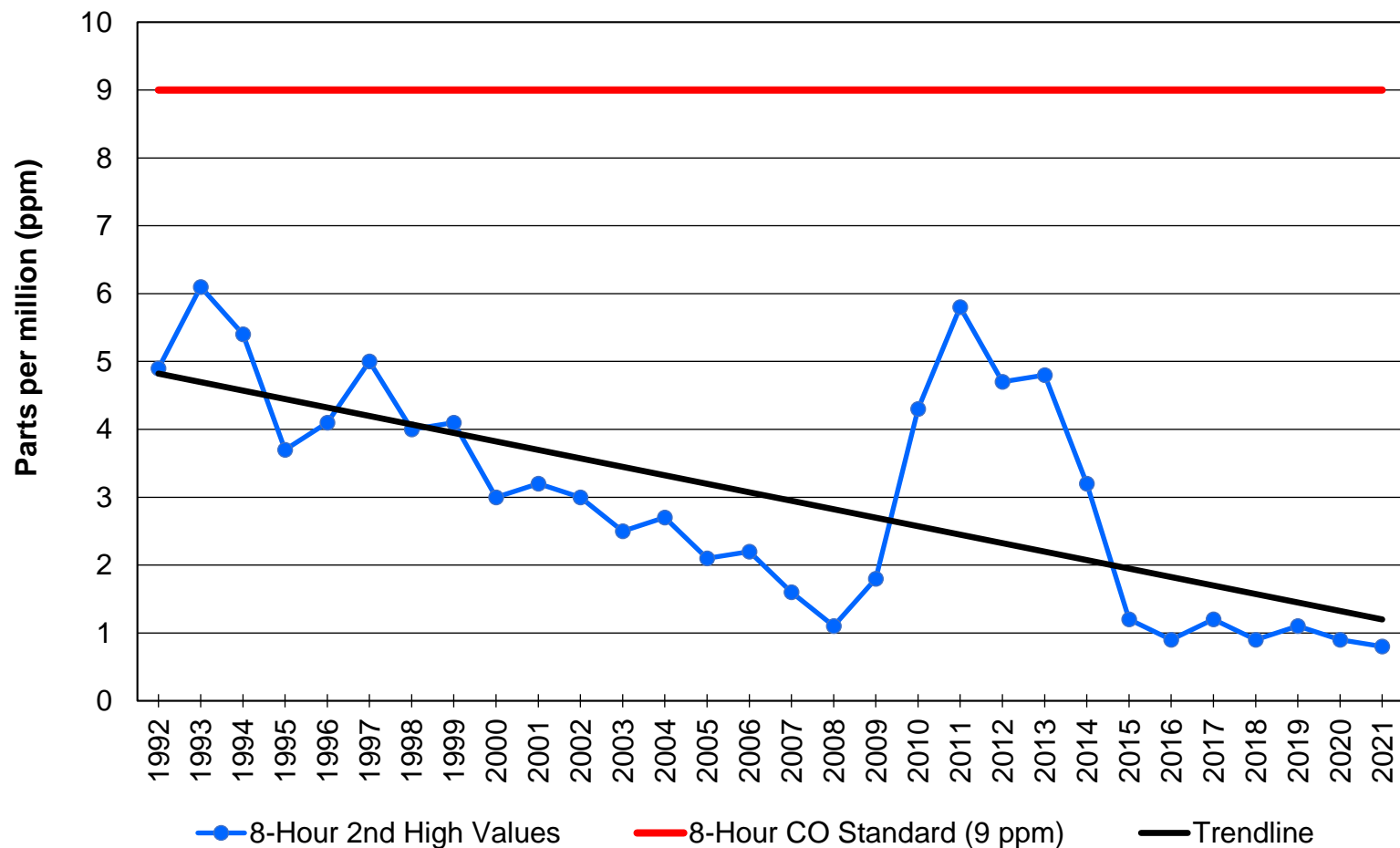
## 1-Hour CO 2<sup>nd</sup> High Values Southwest Indiana



In 1971, United States Environmental Protection Agency (U.S. EPA) established a 1-hour carbon monoxide (CO) standard ([36 FR 8186](#)). The standard was set at 35 parts per million (ppm) not to be exceeded more than once per year, therefore 2<sup>nd</sup> high values are compared to the standard.

# Carbon Monoxide

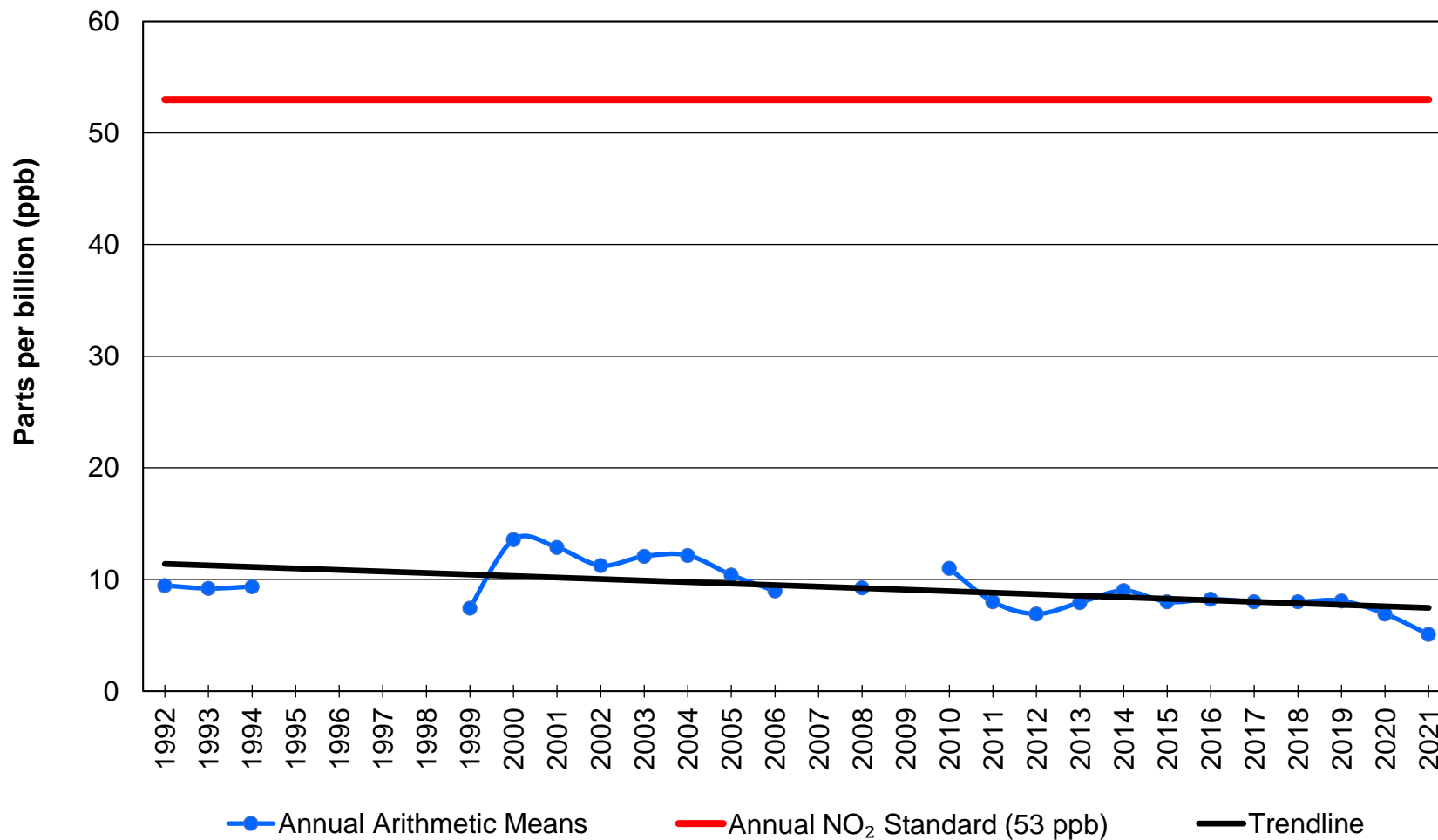
## 8-Hour CO 2<sup>nd</sup> High Values Southwest Indiana



In 1971, United States Environmental Protection Agency (U.S. EPA) established a 8-hour carbon monoxide (CO) standard ([36 FR 8186](#)). The standard was set at 9 parts per million (ppm) not to be exceeded more than once per year.

# Nitrogen Dioxide

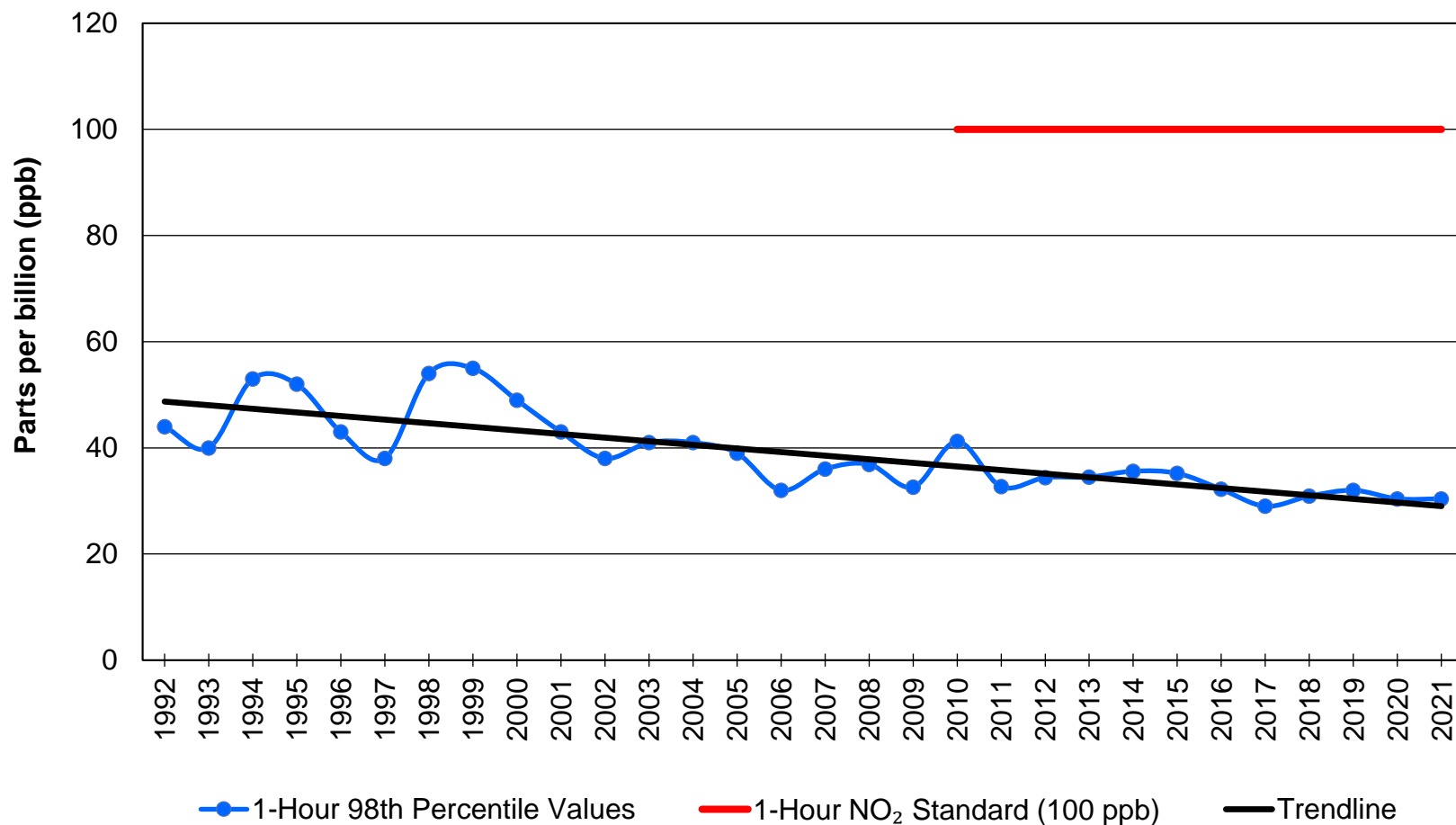
## Annual Arithmetic Mean NO<sub>2</sub> Values Southwest Indiana



In 1971, United States Environmental Protection Agency (U.S.EPA) established an annual nitrogen dioxide (NO<sub>2</sub>) standard ([36 FR 8186](#)). The standard was set at 53 parts per billion (ppb), which cannot be exceeded.

# Nitrogen Dioxide

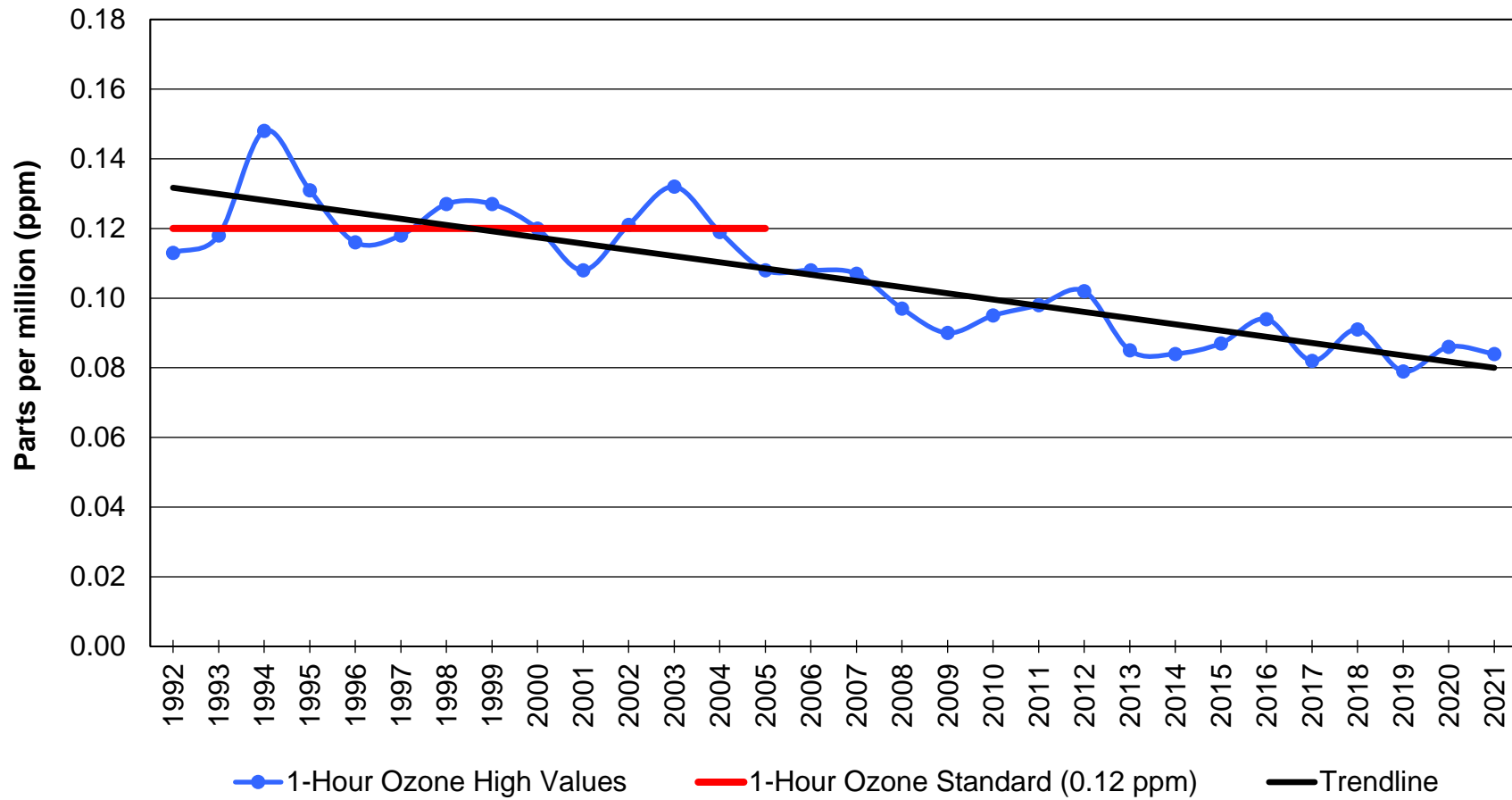
## 1-Hour NO<sub>2</sub> 98<sup>th</sup> Percentile Values Southwest Indiana



In 2010, United States Environmental Protection Agency (U.S. EPA) established a 1-hour nitrogen dioxide (NO<sub>2</sub>) standard ([75 FR 6474](#)). The standard was set at 100 parts per billion (ppb) with the 98<sup>th</sup> percentile of daily maximum concentrations averaged over a 3-year period not to be exceeded.

# Ozone

## 1-Hour Ozone High Values Southwest Indiana

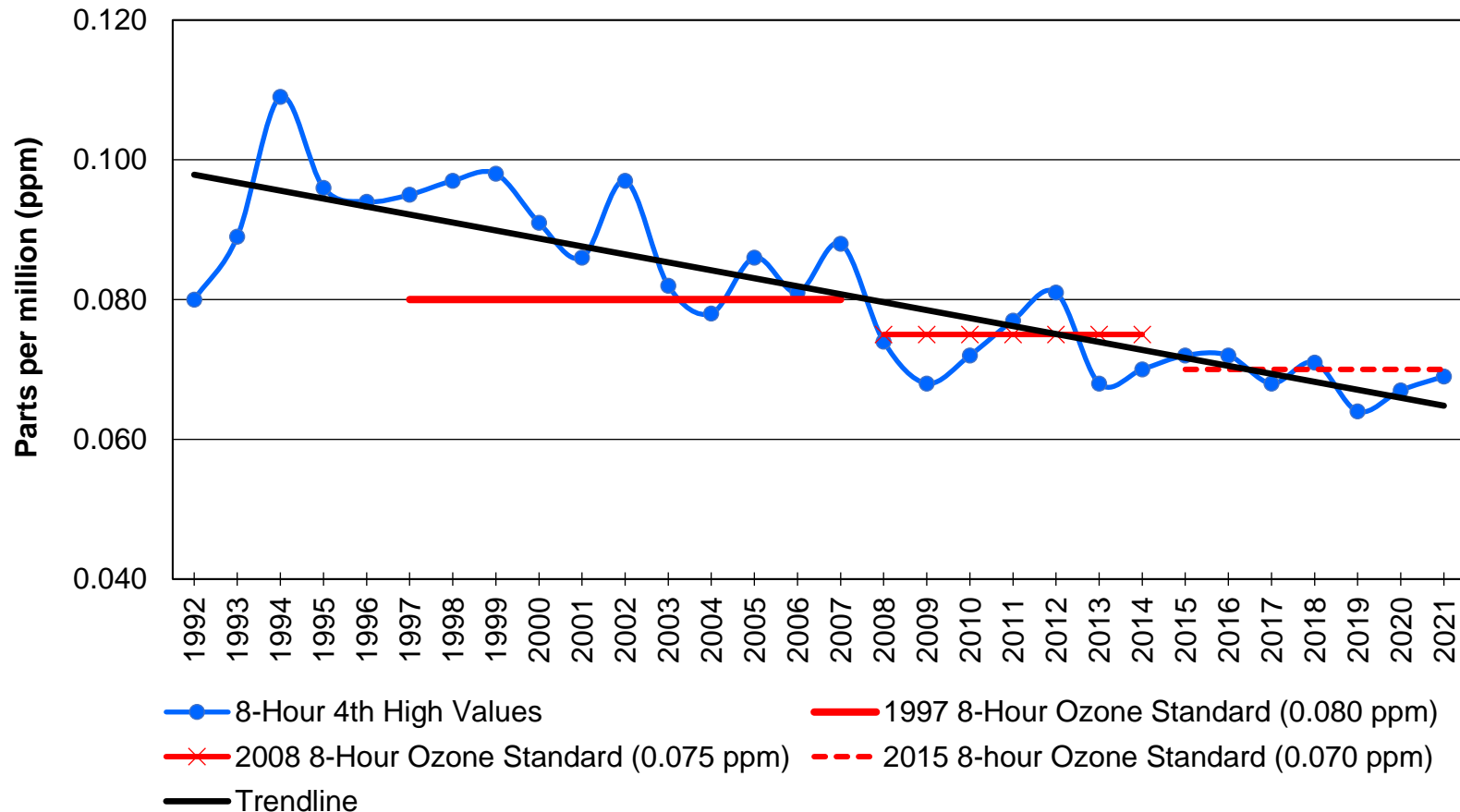


In 1979, United States Environmental Protection Agency (U.S. EPA) established a 1-hour ozone standard ([44 FR 8202](#)). The standard was set at 0.12 parts per million (ppm) not to be exceeded more than once per year on average over three years. In 2005, U.S. EPA revoked the 1-hour standard, however IDEM continues to monitor for the standard.



# Ozone

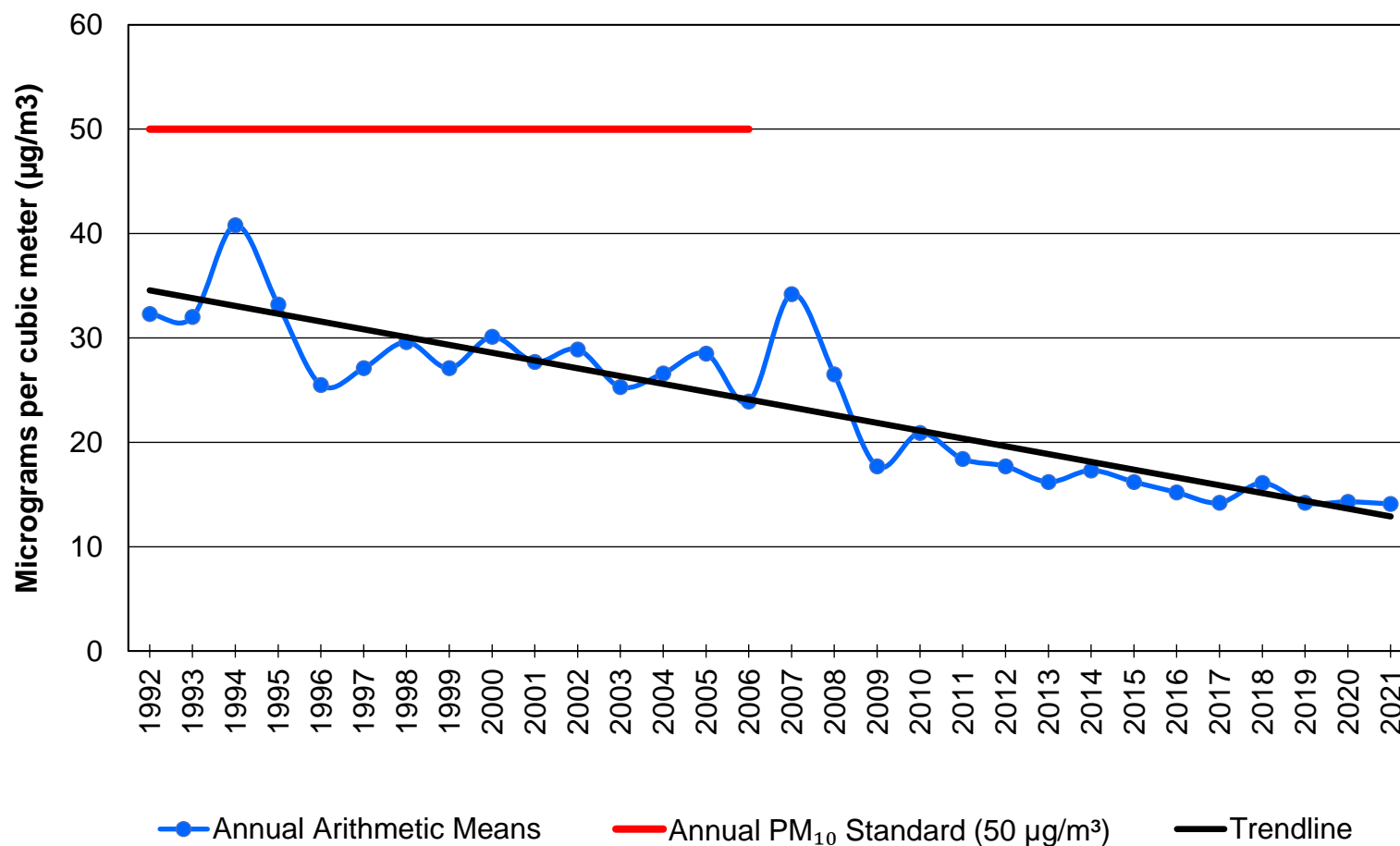
## 8-Hour Ozone 4<sup>th</sup> High Values Southwest Indiana



In 1997, United States Environmental Protection Agency (U.S. EPA) established an 8-hour ozone standard ([62 FR 38856](#)). The standard was set at 0.080 parts per million (ppm) not to be exceeded. In 2007, U.S. EPA lowered the 8-hour standard to 0.075 ppm not to be exceeded ([73 FR 16436](#)) and in 2015 further strengthened the standard to 0.070 ppm ([80 FR 65292](#)). Compliance is determined by evaluating the fourth highest daily maximum concentration averaged over a 3-year period.

# Particulate Matter

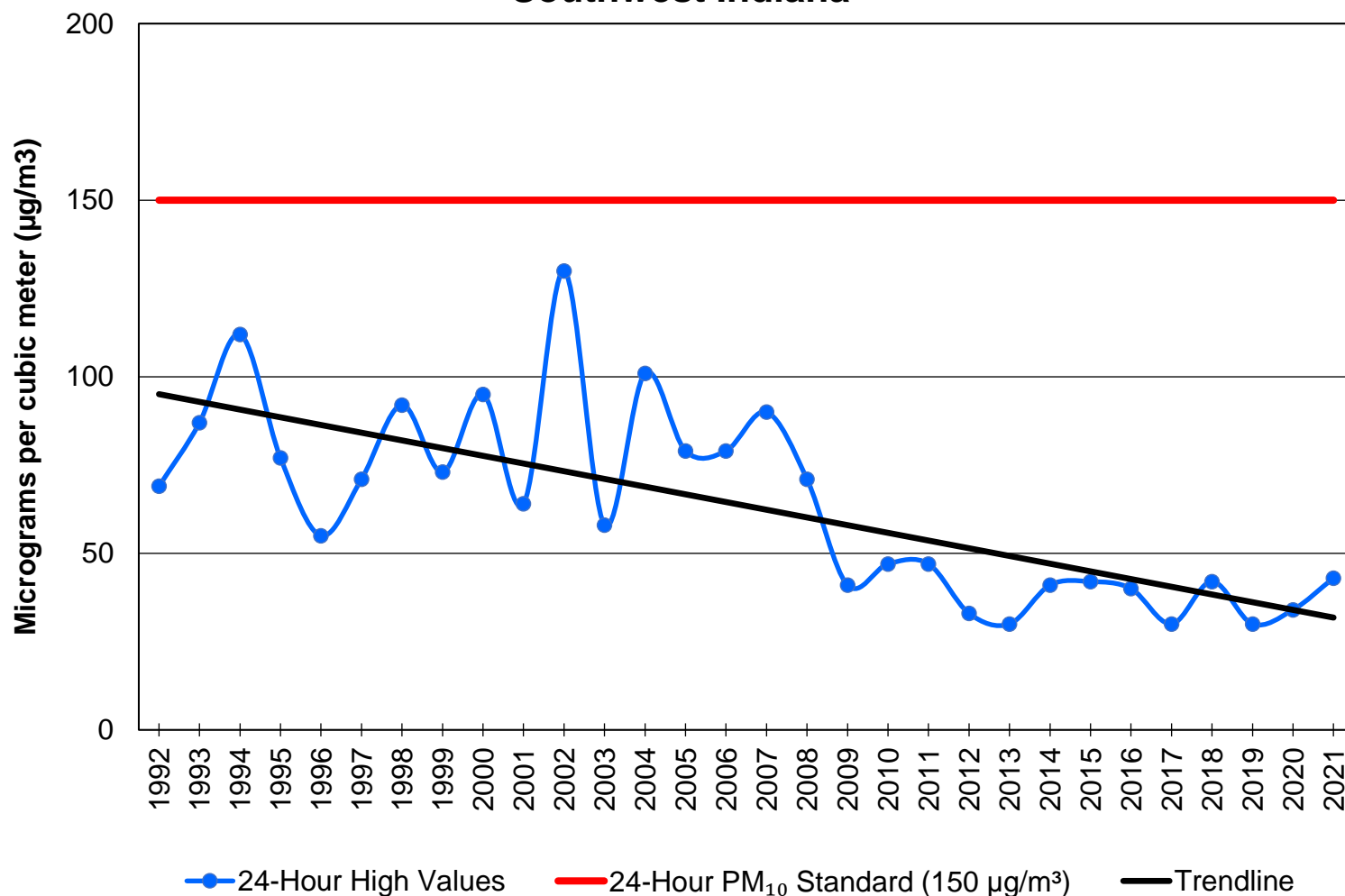
## Annual Arithmetic Mean PM<sub>10</sub> Values Southwest Indiana



In 1987, United States Environmental Protection Agency (U.S. EPA) established an annual coarse particles (PM<sub>10</sub>) standard ([52 FR 24634](#)). The standard was set at 50 micrograms per cubic meter ( $\mu\text{g}/\text{m}^3$ ) with the annual arithmetic mean averaged over a 3-year period not to be exceeded. In 2006, U.S. EPA revoked the annual standard, however IDEM continues to monitor for the annual standard in certain regions.

# Particulate Matter

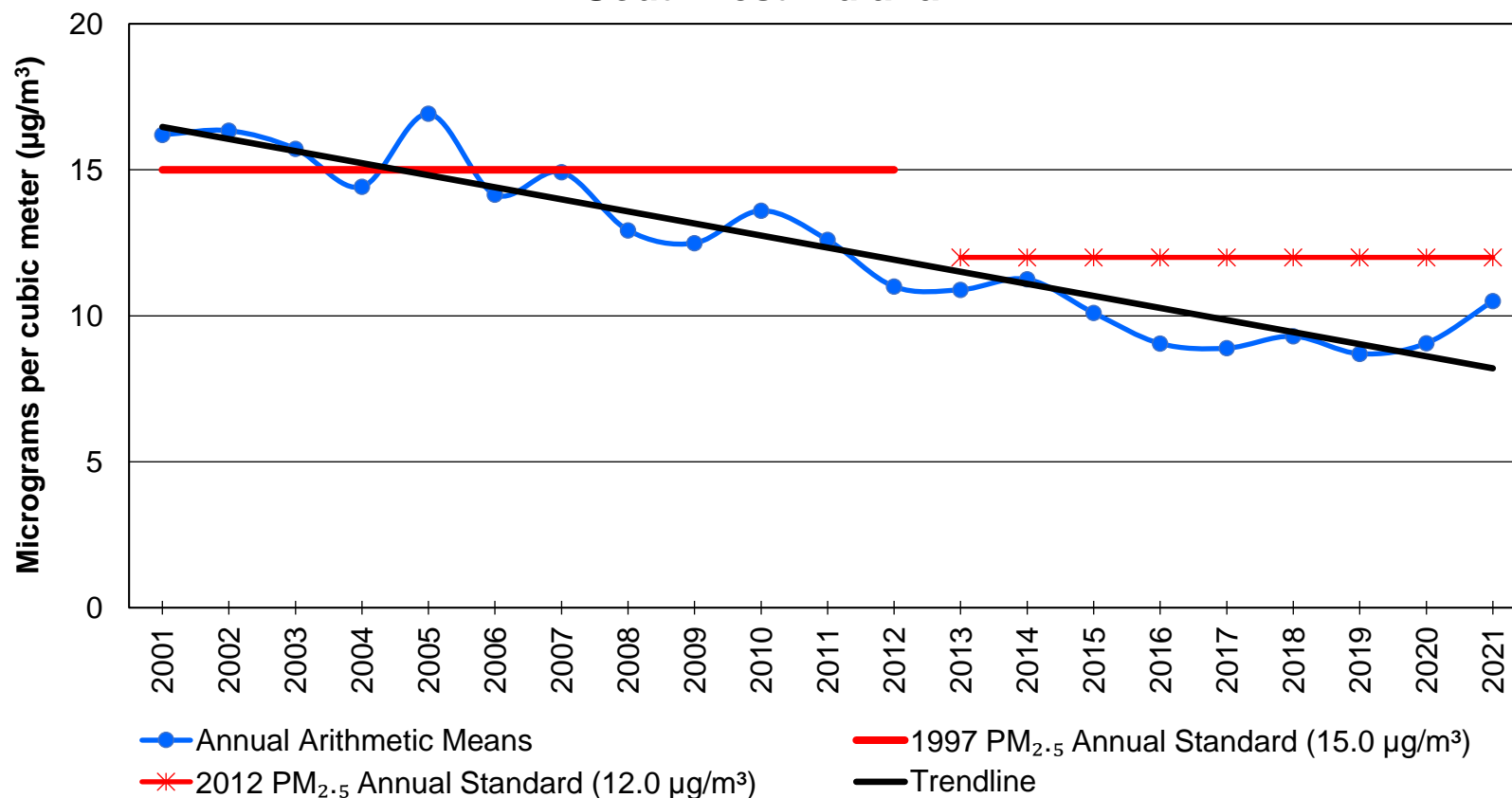
## 24-Hour PM<sub>10</sub> High Values Southwest Indiana



In 1987, United States Environmental Protection Agency (U.S. EPA) established a 24-hour coarse particles (PM<sub>10</sub>) standard ([52 FR 24634](#)). The standard was set at 150 micrograms per cubic meter (µg/m³) not to be exceeded more than once per year on average over three years.

# Particulate Matter

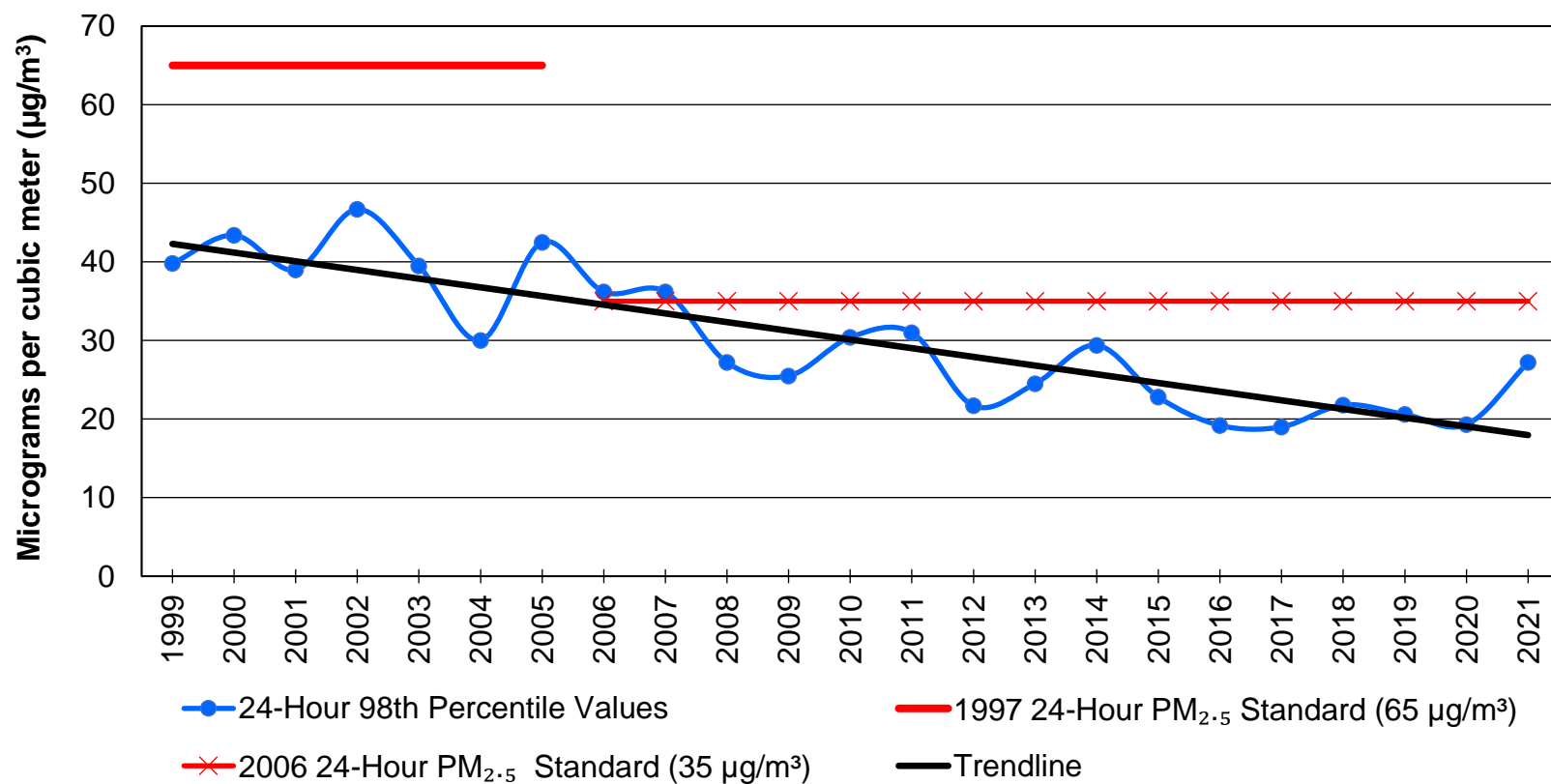
## Annual Arithmetic Mean PM<sub>2.5</sub> Values Southwest Indiana



In 1997, United States Environmental Protection Agency (U.S. EPA) established an annual fine particles (PM<sub>2.5</sub>) standard at 15.0 micrograms per cubic meter (µg/m³) ([62 FR 38652](#)). In 2013, U.S. EPA lowered the standard to 12 µg/m³ ([78 FR 3085](#)). Compliance is determined by evaluating the annual arithmetic mean averaged over a 3-year period not to be exceeded.

# Particulate Matter

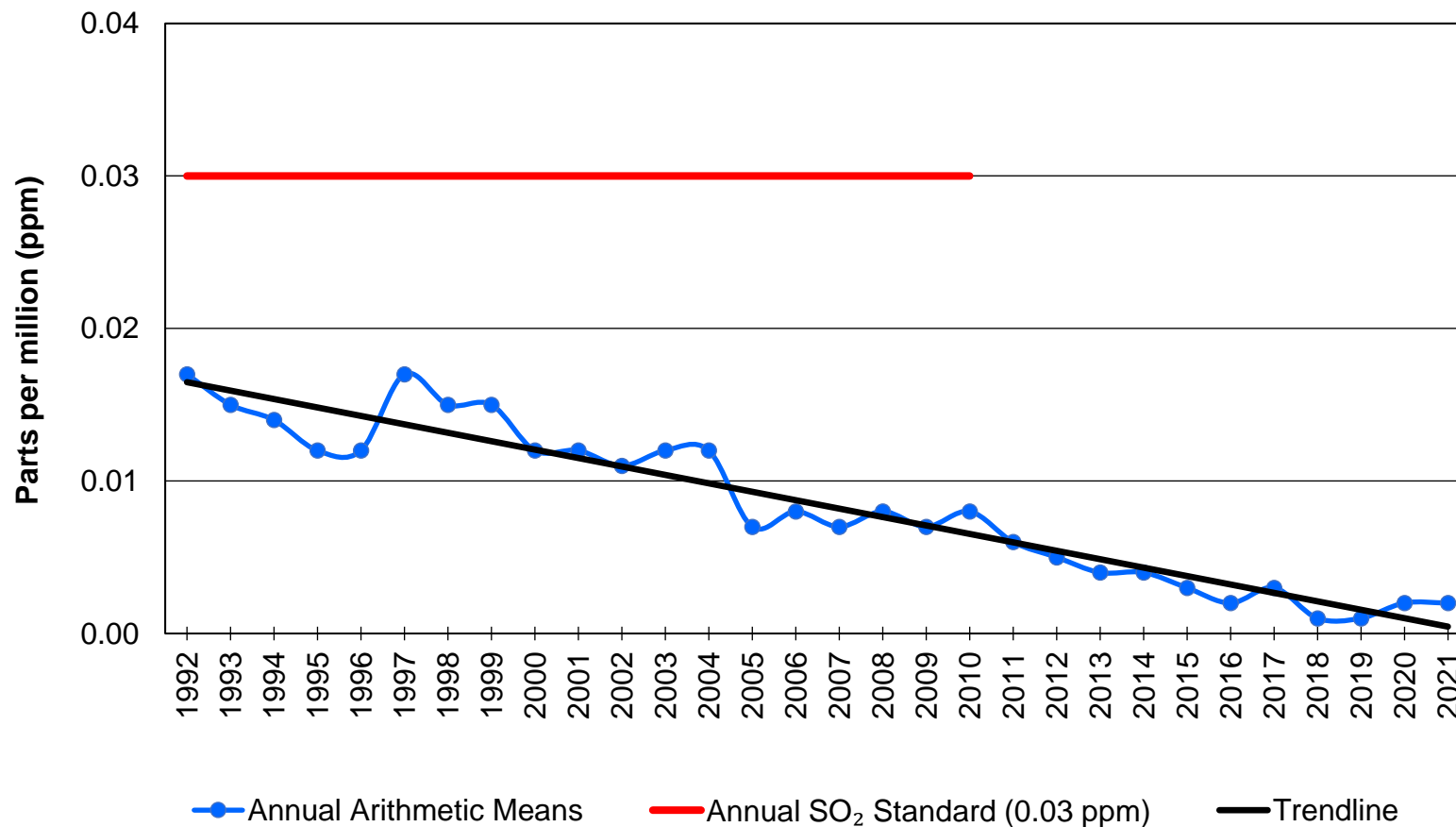
## 24-Hour PM<sub>2.5</sub> 98<sup>th</sup> Percentile Values Southwest Indiana



In 1997, United States Environmental Protection Agency (U.S. EPA) established a 24-hour fine particles (PM<sub>2.5</sub>) standard of 65 micrograms per cubic meter (µg/m³) ([62 FR 38652](#)). In 2006, U.S. EPA lowered the standard to 35 µg/m³ ([71 FR 61144](#)). Compliance is determined by evaluating the 98<sup>th</sup> percentile averaged over a 3-year period not to be exceeded.

# Sulfur Dioxide

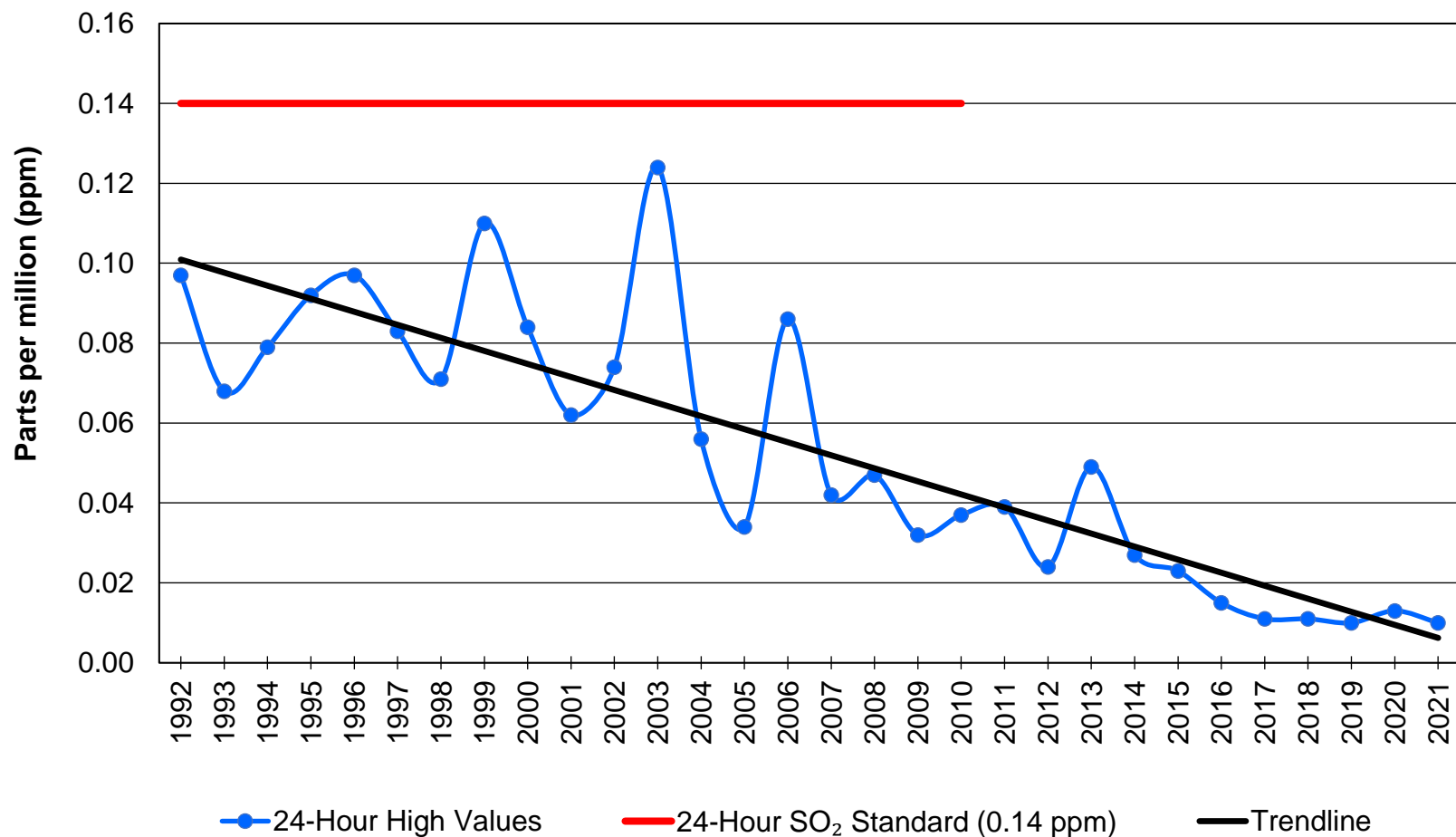
## Annual Arithmetic Mean SO<sub>2</sub> Values Southwest Indiana



In 1971, United States Environmental Protection Agency (U.S. EPA) established an annual sulfur dioxide (SO<sub>2</sub>) standard ([36 FR 8186](#)). The standard was set at 0.03 parts per million (ppm) and was not to be exceeded. In 2010, U.S. EPA revoked the standard, however IDEM continues to monitor for the annual standard in certain regions.

# Sulfur Dioxide

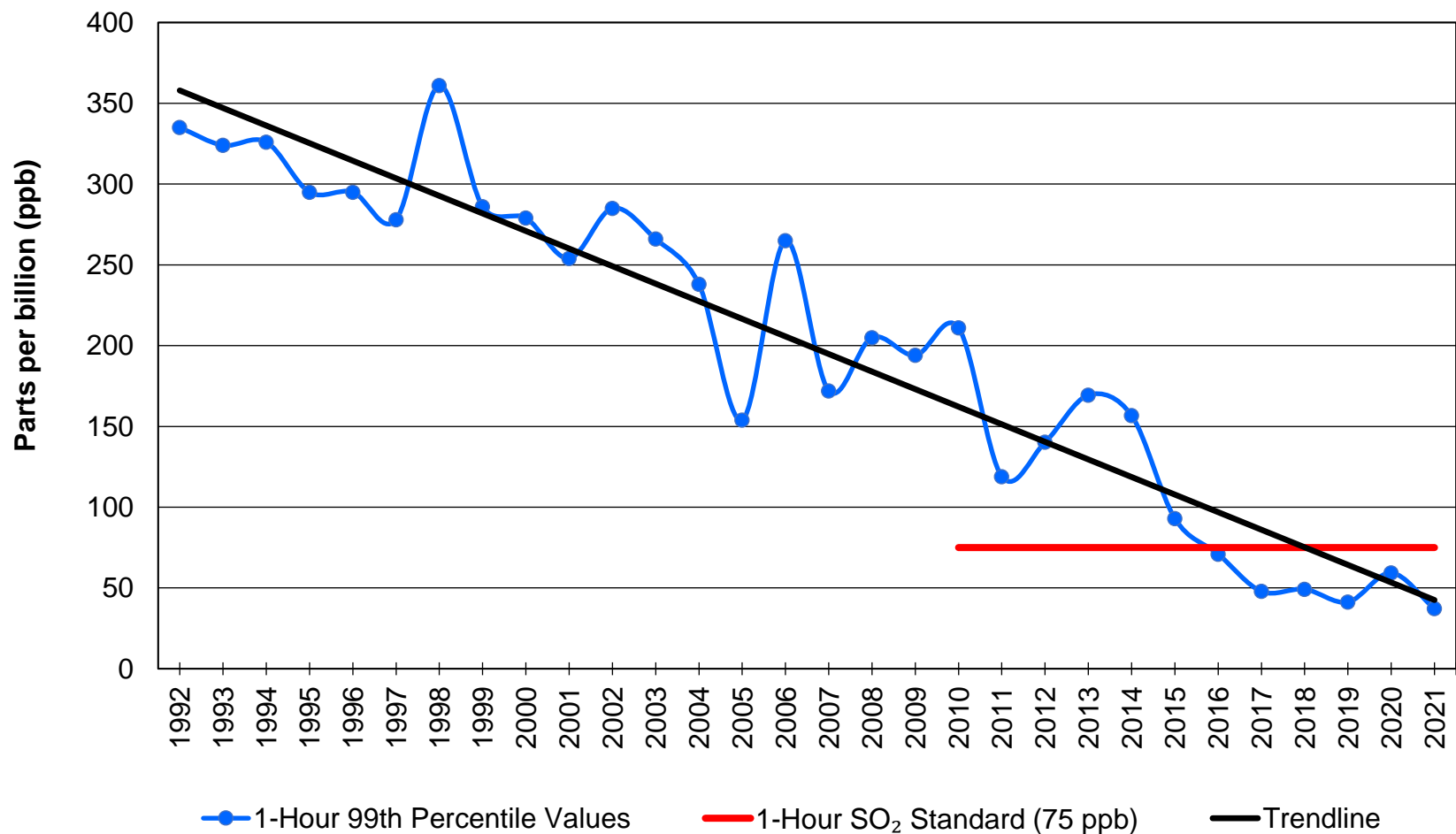
## 24-Hour SO<sub>2</sub> 2<sup>nd</sup> High Values Southwest Indiana



In 1971, United States Environmental Protection Agency (U.S. EPA) established a 24-hour sulfur dioxide (SO<sub>2</sub>) standard ([36 FR 8186](#)). The standard was set at 0.14 parts per million (ppm) and was not to be exceeded more than once per year, therefore 2<sup>nd</sup>-high values are compared to the standard. In 2010, U.S. EPA revoked the standard, however IDEM continues to monitor for the 24-hour standard in certain regions.

# Sulfur Dioxide

## Highest 1-Hour SO<sub>2</sub> 99<sup>th</sup> Percentile Values Southwest Indiana



In 2010, United States Environmental Protection Agency (U.S. EPA) established a 1-hour sulfur dioxide (SO<sub>2</sub>) standard ([75 FR 35520](#)). The standard was set at 75 parts per billion (ppb) with the 99<sup>th</sup> percentile of 1-hour daily maximum concentrations averaged over a 3-year period not to be exceeded.



# Air Quality and You

---

- To learn more about your air quality and what you can do to help, visit:

## Indiana's Smogwatch Air Quality:

[Current Conditions \(in.gov\)](#)

- To acquire additional information about air quality in Indiana and IDEM's role, visit:

[www.idem.IN.gov/airquality](http://www.idem.IN.gov/airquality)

# **Contact Information for IDEM's Office of Air Quality**

---

- To call, please dial:

**(317) 233-0178**

- To write, please use this mailing address:

**IDEM, Office of Air Quality  
100 North Senate Avenue, IGCN 1003  
Indianapolis, IN 46204-2251**